

TABLE OF CONTENTS

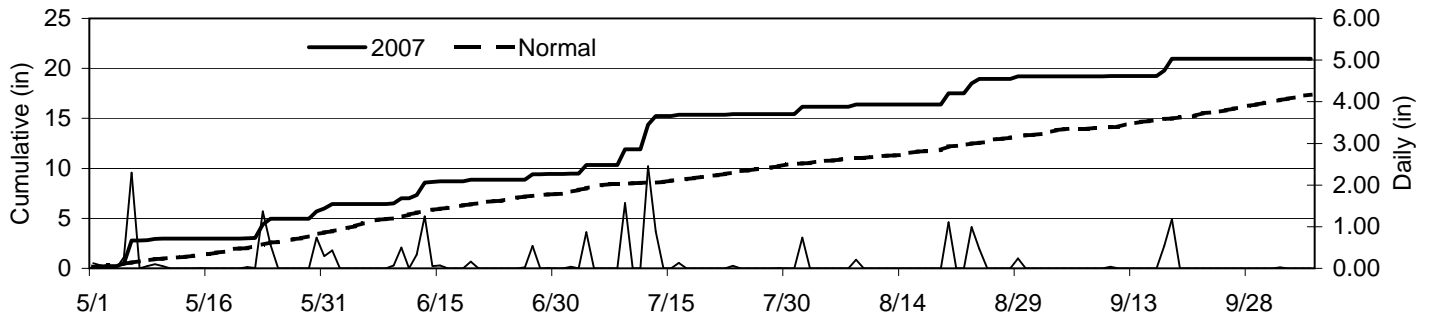
2007 Cotton Performance Tests

Pratt County Irrigated Growing Conditions	1
Pratt County Irrigated Yield Table	2
Reno County Dryland Growing Conditions	3
Reno County Dryland Yield Table	4
Stevens County Irrigated Growing Conditions	5
Stevens County Irrigated Yield Table	6

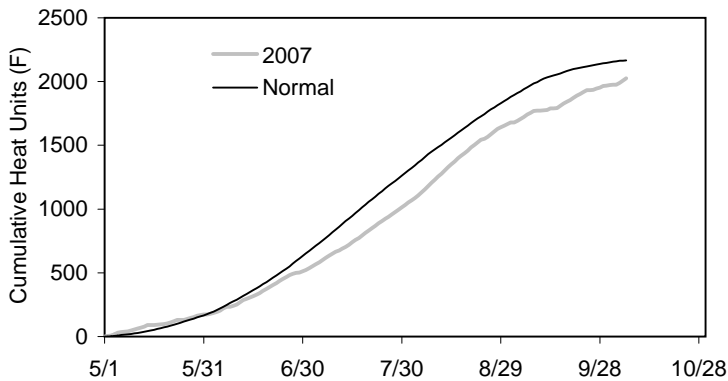
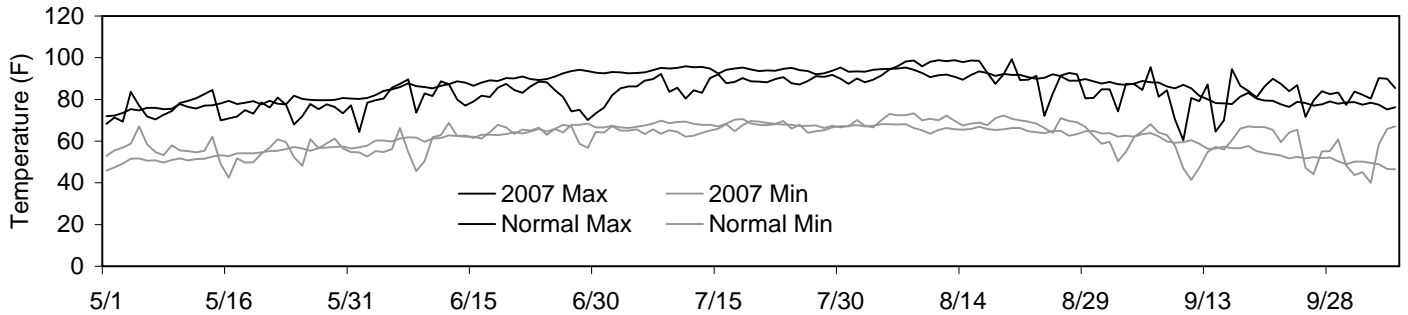
Pratt Co. Irrigated Cotton Performance Test, 2007

County:	Pratt	Herbicides		
Location:	Stuart Briggeman Farm (Cullison)	Pre:		
Soil Type:	Blanket Silt Loam/Narron Loam	Post:		
Fertilizer (lbs/a)	N P2O5 K2O	PGR:		
		Insecticide:	5 lb Temik In-Furrow	
Dates:		Harvest Aids:		
Planting:	6/6/2007	Soil Test:	P (ppm) 62	pH 5.1
Harvest:	11/16/2007		K (ppm) 340	O.M.(%) --
Seeding		Previous Crop:	Corn	
Rate:	70000 seed/a			

Precipitation



Temperature



Month	Avg Temp		Precipitation		GDD	
	2007	Normal	2007	Normal	2007	Normal
May	65	65	6.0	3.6	173	167
June	71	76	3.4	3.9	339	466
July	77	81	6.0	3.0	519	649
Aug	80	79	3.8	2.9	635	581
Sept	70	69	1.8	3.2	303	284
Oct	59	58	0.8	3.7	106	25
Total	71	71	21.8	20.3	2074	2172

Pratt Co. Irrigated Cotton Performance Test, 2007

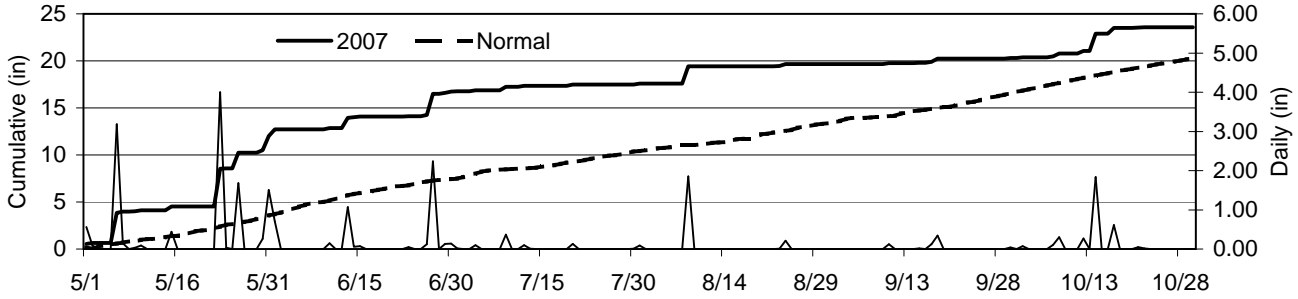
2007

Company	Variety	Lint Yield, lb/a					Yield							
		2007	2006	2005	2yr		% of Test Avg	% Lint	Mic	Length in	Unif. %	Strengt g/tex	Color Grade	
					Avg	Avg								
AFD	5065B2F	1597	1067	--	1332	--	113	0.28	3.44	1.25	83.35	29.20	52	1
All-Tex	45008_RF	1216	--	--	--	--	86	0.24	3.84	1.16	83.85	28.55	52	2
All-Tex	65016_RF	1161	--	--	--	--	82	0.22	3.36	1.29	84.05	28.25	42	1
Americot	AM_1504_B2RF	1484	1549	--	1517	--	105	0.25	3.34	1.23	83.60	28.60	53	1
Americot	AM_1664_B2RF	1439	--	--	--	--	102	0.29	4.13	1.21	82.84	25.70	21	3
Americot	AMX_551RF	1009	--	--	--	--	72	0.23	3.97	1.19	85.65	35.49	11	3
Americot	AMX_556RF	1086	--	--	--	--	77	0.21	3.13	1.24	83.75	23.43	71	3
Croplan_Genetics	CG_3020B2RF	1334	1555	1254	1445	1381	95	0.24	3.18	1.24	81.83	28.16	52	1
Croplan_Genetics	CG_3035RF	1487	--	--	--	--	105	0.26	3.14	1.23	83.06	27.25	53	1
Croplan_Genetics	CG_3220B2RF	1096	--	--	--	--	78	0.23	3.27	1.28	81.93	29.26	11	1
Croplan_Genetics	CG_3520B2RF	1563	1327	1339	1445	1410	111	0.24	3.22	1.25	82.55	26.00	52	1
Croplan_Genetics	CG_4020B2RF	1371	1327	1105	1349	1268	97	0.25	2.95	1.28	81.66	24.85	52	2
DP&L	2145_RR	1036	1552	1182	1294	1257	73	0.27	4.22	1.12	82.15	26.20	62	1
DP&L	DP_117_B2RF	1707	1614	1573	1660	1631	121	0.29	4.23	1.31	84.65	35.71	32	1
DP&L	DP_121_RF	1599	--	--	--	--	113	0.27	3.64	1.22	83.35	26.45	52	2
DP&L	PM_2141_B2RF	1587	1466	--	1526	--	112	0.28	3.56	1.24	82.45	25.80	51	3
DP&L	PM_2150_B2RF	1491	--	--	--	--	106	0.27	3.23	1.25	83.40	30.40	52	2
DP&L	PM_3225_B2RF	1608	--	--	--	--	114	0.27	3.64	1.26	84.35	30.60	42	2
Dyna_Gro	CTO_7550_B2RF	1494	--	--	--	--	106	0.27	3.24	1.18	81.17	24.94	53	2
Dyna_Gro	DG_2100_B2RF	1460	1468	--	1464	--	103	0.25	3.12	1.22	83.35	23.15	52	1
Dyna_Gro	DG_2242_B2RF	1627	--	--	--	--	115	0.27	3.38	1.25	82.95	24.80	52	1
Dyna_Gro	DG_2383_RF	1188	--	--	--	--	84	0.27	3.49	1.18	82.10	25.64	62	1
Dyna_Gro	DG_2490_B2RF	1400	--	--	--	--	99	0.27	3.37	1.21	81.80	24.70	51	4
Dyna_Gro	DG_2520_B2RF	1228	--	--	--	--	87	0.25	3.39	1.22	80.64	25.74	53	1
Dyna_Gro	DG_OA265_RF	883	--	--	--	--	63	0.24	3.37	1.22	84.50	30.55	52	1
Fibermax	FM_9058F	1779	1630	--	1704	--	126	0.28	3.05	1.30	81.25	21.15	83	1
Fibermax	FM_9150F	1706	--	--	--	--	121	0.30	3.05	1.28	82.75	30.45	52	2
Fibermax	FM_9180B2F	1641	--	--	--	--	116	0.25	3.48	1.21	82.15	29.50	51	3
Nexgen	NG_1553R	1194	1390	1140	1292	1241	85	0.23	3.27	1.27	83.95	30.20	52	1
Nexgen	NG_1572RF	1323	--	--	--	--	94	0.26	3.35	1.24	83.05	27.65	51	3
Nexgen	NG_2448R	1139	1491	1201	1315	1277	81	0.26	3.60	1.19	84.25	29.10	42	2
Nexgen	NG_2549B2RF	1479	--	--	--	--	105	0.28	3.64	1.21	84.20	27.80	52	2
Nexgen	NG_3273B2RF	1464	1402	--	1433	--	104	0.24	3.00	1.23	82.21	25.75	52	2
Nexgen	NG_3348B2RF	1703	--	--	--	--	121	0.29	3.93	1.24	84.30	27.40	52	1
Nexgen	NG_3410RF	1580	--	--	--	--	112	0.28	3.68	1.28	83.24	32.93	41	4
Nexgen	NG_3550RF	1218	684	1085	951	996	86	0.27	3.43	1.27	83.65	24.50	71	3
PhytoGen	PHY_315_WRF	1490	--	--	--	--	106	0.26	3.50	1.22	83.55	26.65	42	2
PhytoGen	PHY_370_WR	989	1526	--	1257	--	70	0.25	3.51	1.15	83.30	27.05	42	2
PhytoGen	PHY_375_WRF	1795	--	--	--	--	127	0.27	3.59	1.24	83.50	27.45	42	2
PhytoGen	PHY_425_WRF	1757	--	--	--	--	125	0.28	3.50	1.26	84.45	29.50	53	1
PhytoGen	PHY_485_WRF	1519	1500	--	1509	--	108	0.26	3.78	1.23	84.35	31.37	42	1
Stoneville	ST_4427B2RF	1537	--	--	--	--	109	0.27	3.52	1.17	81.95	26.00	52	2
Stoneville	ST_4498B2RF	1415	--	--	--	--	100	0.26	3.09	1.25	82.56	23.17	82	1
Stoneville	ST_4554B2RF	1424	1693	1131	1559	1416	101	0.26	4.00	1.18	82.25	28.25	52	1
Stoneville	ST_4596B2RF	1247	--	--	--	--	88	0.25	3.14	1.22	81.37	24.23	83	2
Stoneville	ST_4678B2RF	1493	--	--	--	--	106	0.26	3.61	1.24	82.60	27.75	62	1
Stoneville	ST_5327B2RF	1260	--	--	--	--	89	0.26	3.34	1.21	84.05	30.90	32	1
	Average	1411	1405	1105	1408	1307		0.26	3.46	1.22	83.06	27.62	--	--
	CV (%)	12	15	7	13	11		14	7	2	1	12	--	--
	LSD(0.05)	239	336	126	287	234		0.05	0.48	0.05	1.77	6.60	--	--

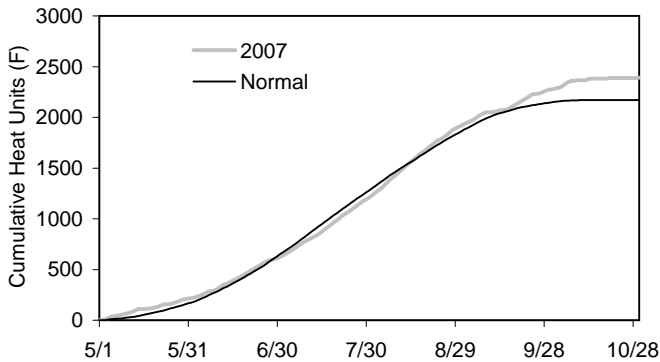
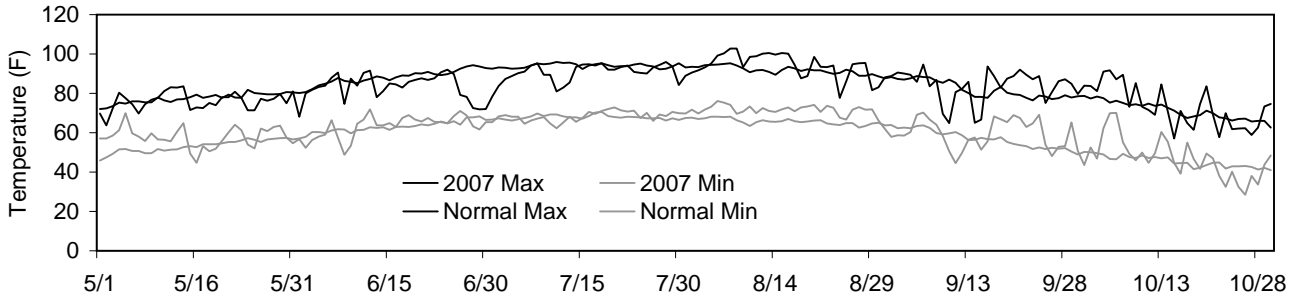
Reno Co. Dryland Cotton Performance Test, 2007

County: Reno	Herbicides							
Location: SC Exp Fld - Partridge Unit	Pre: None							
Soil Type: Funmar-Taver loam	Post: 40 oz Round-up using hooded sprayer							
Fertilizer (lbs/a)	PGR: None							
<table style="margin-left: auto; margin-right: auto;"> <tr> <td style="padding: 0 10px;">N</td> <td style="padding: 0 10px;">P2O5</td> <td style="padding: 0 10px;">K2O</td> </tr> <tr> <td style="text-align: center;">80</td> <td style="text-align: center;">0</td> <td style="text-align: center;">0</td> </tr> </table>	N	P2O5	K2O	80	0	0	Insecticide: 5 lb Temik In-Furrow	
N	P2O5	K2O						
80	0	0						
Dates:	Harvest Aids:							
Planting: 6/11/2007	Soil Test:	P (ppm) 38 pH 5.4						
Harvest: 12/4/2007		K (ppm) 296 O.M.(%) 1.1						
Seeding Rate: 70000 seed/a	Previous Crop: Sorghum							

Precipitation



Temperature



Month	Avg Temp		Precipitation		GDD	
	2007	Normal	2007	Normal	2007	Normal
May	67	65	12.0	3.6	215	166
June	73	76	4.7	3.9	397	466
July	79	81	0.8	3.0	601	649
Aug	83	79	2.1	2.9	707	581
Sept	72	69	0.6	3.2	355	284
Oct	60	58	3.3	3.7	116	25
Total	72	71	23.6	20.3	2391	2171

Reno Co. Dryland Cotton Performance Test, 2007

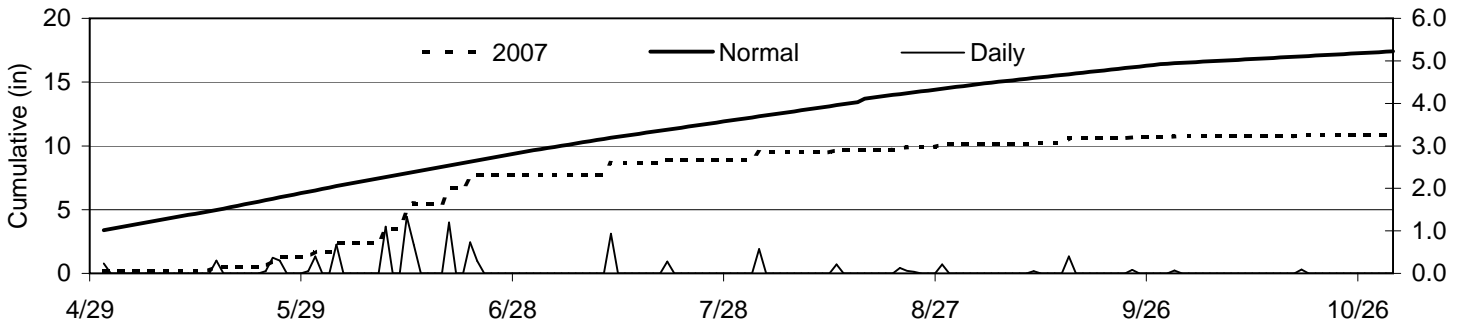
		2007												
Company	Variety	Lint Yield, lb/a			Yield		Length in	Unif. %	Strenght g/tex	Color Grade				
		2007	2006	2004*	2yr Avg	3yr Avg					% of Test Avg	% Lint		
AFD	5062LL	453	--	--	--	--	98	0.31	4.80	1.18	83.00	27.65	51	2
All-Tex	45008_RF	443	--	--	--	--	96	0.30	5.36	1.03	82.75	29.10	61	1
All-Tex	65016_RF	392	--	--	--	--	85	0.29	4.80	1.12	82.25	28.40	51	1
Americot	AM_1504_B2RF	465	844	--	655	--	101	0.33	5.30	1.09	82.15	23.75	51	2
Americot	AM_1664_B2RF	495	--	--	--	--	108	0.34	5.40	1.12	82.95	24.85	61	1
Americot	AMX_551RF	467	--	--	--	--	101	0.31	5.65	1.02	81.55	26.80	61	1
Americot	AMX_556RF	478	--	--	--	--	104	0.31	5.70	1.12	82.90	27.75	51	4
Croplan_Genetics	CG_3020B2RF	416	678	--	547	--	90	0.31	5.05	1.09	82.25	25.35	51	2
Croplan_Genetics	CG_3035RF	481	--	--	--	--	105	0.34	5.50	1.15	83.05	27.00	52	1
Croplan_Genetics	CG_3220B2RF	467	--	--	--	--	101	0.32	5.30	1.14	82.95	26.70	51	3
Croplan_Genetics	CG_3520B2RF	373	807	--	590	--	81	0.32	5.00	1.08	80.45	25.25	61	1
Croplan_Genetics	CG_4020B2RF	392	768	--	580	--	85	0.29	4.65	1.13	82.30	26.35	51	4
DP&L	2145_RR	485	541	908	513	645	105	0.34	5.30	1.08	82.60	28.80	61	2
DP&L	DP_121_RF	403	--	--	--	--	87	0.34	5.40	1.12	82.75	27.40	61	1
DP&L	PM_2141_B2RF	572	1173	--	873	--	124	0.35	5.63	1.11	82.50	23.95	71	1
DP&L	PM_2150_B2RF	499	--	--	--	--	108	0.33	4.80	1.13	82.60	27.20	61	1
DP&L	PM_3225_B2RF	539	--	--	--	--	117	0.34	6.55	1.12	82.70	27.40	71	1
DP&L	PM_3535_BG/RR	508	--	--	--	--	110	0.34	4.75	1.14	82.00	29.40	51	2
Dyna_Gro	CTO_7550_B2RF	464	--	--	--	--	101	0.30	5.05	1.15	84.25	28.50	52	2
Dyna_Gro	DG_2100_B2RF	490	877	--	683	--	106	0.34	5.25	1.09	81.95	23.75	51	2
Dyna_Gro	DG_2242_B2RF	448	--	--	--	--	97	0.34	5.75	1.09	82.25	23.20	61	2
Dyna_Gro	DG_2383_RF	553	--	--	--	--	120	0.32	5.45	1.13	82.30	24.80	71	1
Dyna_Gro	DG_2490_B2RF	435	--	--	--	--	94	0.33	4.70	1.11	82.60	26.55	61	1
Dyna_Gro	DG_2520_B2RF	451	--	--	--	--	98	0.32	5.05	1.16	82.15	25.25	61	3
Dyna_Gro	DG_OA265_RF	350	--	--	--	--	76	0.30	5.20	1.23	84.90	33.00	61	1
Fibermax	FM_1600LL	475	--	--	--	--	103	0.34	5.10	1.08	81.65	26.35	51	2
Fibermax	FM_9150F	469	--	--	--	--	102	0.34	5.50	1.16	82.25	26.60	51	4
Fibermax	FM_9180B2F	370	--	--	--	--	80	0.28	5.05	1.16	82.90	29.05	61	1
Nexgen	NG_1553R	511	774	1046	642	777	111	0.34	4.75	1.13	82.90	28.85	61	1
Nexgen	NG_1572RF	495	--	--	--	--	108	0.35	5.35	1.13	82.80	26.90	61	1
Nexgen	NG_2448R	452	731	939	592	708	98	0.33	4.96	1.11	83.35	29.80	51	2
Nexgen	NG_2549B2RF	480	--	--	--	--	104	0.35	5.00	1.10	82.05	26.55	61	2
Nexgen	NG_3273B2RF	423	700	--	562	--	92	0.32	5.05	1.12	81.75	24.45	61	1
Nexgen	NG_3348B2RF	523	--	--	--	--	114	0.34	4.95	1.10	81.20	26.45	61	1
Nexgen	NG_3410RF	499	--	--	--	--	108	0.35	4.85	1.13	81.95	27.80	51	2
Nexgen	NG_3550RF	452	852	--	652	--	98	0.34	5.05	1.08	81.75	25.85	51	2
PhytoGen	PHY_315_WRF	442	--	--	--	--	96	0.33	5.05	1.07	80.70	24.15	61	1
PhytoGen	PHY_370_WR	413	776	--	595	--	90	0.35	5.30	1.10	82.50	26.30	51	2
PhytoGen	PHY_375_WRF	457	--	--	--	--	99	0.35	5.30	1.10	82.90	25.90	51	2
PhytoGen	PHY_425_WRF	565	--	--	--	--	123	0.35	5.75	1.11	83.05	27.55	61	3
PhytoGen	PHY_485_WRF	479	760	--	620	--	104	0.34	5.80	1.12	83.90	27.25	61	1
Stoneville	ST_4427B2RF	555	--	--	--	--	121	0.38	6.00	1.11	80.90	23.95	61	1
Stoneville	ST_4498B2RF	384	--	--	--	--	83	0.34	6.45	1.16	83.95	27.50	62	1
Stoneville	ST_4554B2RF	433	720	--	577	--	94	0.34	5.15	1.14	83.25	29.05	52	2
Stoneville	ST_4596B2RF	438	--	--	--	--	95	0.34	5.75	1.20	83.20	28.00	61	4
Stoneville	ST_4678B2RF	540	--	--	--	--	117	0.34	5.95	1.13	83.40	25.95	61	1
Stoneville	ST_5327B2RF	406	--	--	--	--	88	0.35	5.10	1.14	82.95	30.10	61	3
	Average	460	773	867	617	700	100	0.333	5.3	1.12	82.50	26.7	--	--
	CV (%)	21	25	9	23	18		12	7	2	1	5	--	--
	LSD(0.05)	122	274	105	198	167		0.05	0.78	0.05	1.99	2.62	--	--

* 2004 yields presented instead of 2005 because plots were hailed out in 2005

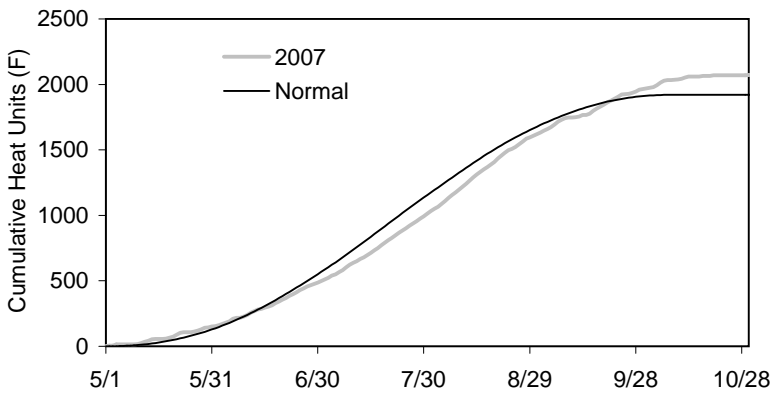
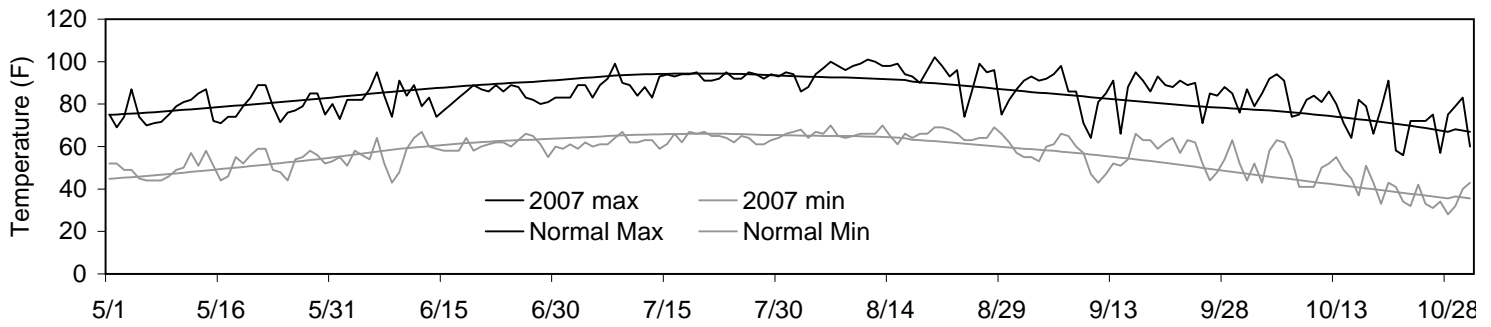
Stevens Co. Irrigated Cotton Performance Test, 2007

County:	Stevens	Herbicides		
Location:	Lahey Farms (Moscow)	Pre:		
Soil Type:	Richfield	Post:		
Fertilizer (lbs/a)		PGR:		
	N	P2O5	K2O	
	50	35	0	
Dates:		Insecticide:	5 lb Temik In-Furrow	
Planting:	5/23/2007	Harvest Aids:	0	
Harvest:	11/14/2007	Soil Test:	P (ppm)	12
			K (ppm)	492
			pH	7.2
			O.M.(%)	1.6
Seeding Rate:	70000 seed/a	Previous Crop:	Corn	

Precipitation



Temperature



Month	Avg Temp		Precipitation		GDD	
	2007	Normal	2007	Normal	2007	Normal
May	65	64	1.7	3.2	151	128
June	71	74	6.0	3.0	336	422
July	77	80	1.2	2.6	526	605
Aug	80	77	1.2	2.3	607	522
Sept	71	68	0.6	1.8	344	233
Oct	60	58	0.1	0.9	109	10
Total	71	70	10.8	13.9	2073	1921

Stevens Co. Irrigated Cotton Performance Test, 2007

		Lint Yield, lb/a					Yield		2007						
Company	Variety	Damage Rating*						% of Test Avg	% Lint	Mic	Length in	Unif. %	Strength g/tex	Color Grade	
			2007	2006	2005	2yr Avg	3yr Avg							1	2
AFD	5064F	2	1646	1628	--	1637	--	100	0.30	4.44	1.16	82.45	27.10	51	1
AFD	5065B2F	2	1370	1498	--	1434	--	84	0.26	3.75	1.17	82.05	27.40	41	2
All-Tex	45008_RF	2	1434	--	--	--	--	87	0.28	4.31	1.14	82.95	29.55	51	1
All-Tex	65016_RF	3	1417	--	--	--	--	86	0.28	3.75	1.18	82.25	27.20	41	1
Americot	AM_1504_B2RF	4	**	1505	--	1505	--	**	0.30	3.84	1.17	81.10	24.00	41	2
Americot	AM_1664_B2RF	4	**	--	--	--	--	**	0.31	3.83	1.15	80.60	24.65	51	1
Americot	AMX_551RF	2	1363	--	--	--	--	83	0.29	4.30	1.15	82.45	28.65	41	1
Americot	AMX_556RF	2	1303	--	--	--	--	79	0.27	4.31	1.17	83.65	29.85	51	1
Croplan_Genetics	CG_3020B2RF	4	**	1539	764	1539	--	**	0.30	3.60	1.17	80.60	28.75	51	1
Croplan_Genetics	CG_3035RF	4	**	--	--	--	--	**	0.33	4.10	1.14	80.95	27.00	41	1
Croplan_Genetics	CG_3220B2RF	5	**	--	--	--	--	**	0.31	4.10	1.20	82.50	25.60	51	1
Croplan_Genetics	CG_3520B2RF	4	**	1548	1085	1548	--	**	0.36	4.15	1.14	80.85	24.55	51	2
Croplan_Genetics	CG_4020B2RF	4	**	1438	888	1438	--	**	0.30	3.81	1.17	80.80	25.30	51	1
DP&L	2145_RR	1	1496	1517	1333	1506	1449	91	0.29	4.03	1.07	80.75	27.10	41	2
DP&L	DP_117_B2RF	3	2019	1601	1027	1810	1549	123	0.33	4.04	1.20	82.50	29.45	51	1
DP&L	DP_121_RF	3	1786	--	--	--	--	109	0.31	4.21	1.17	82.85	26.50	41	1
DP&L	PM_2141_B2RF	1	1939	1647	--	1793	--	118	0.32	3.68	1.15	81.85	27.00	51	1
DP&L	PM_2150_B2RF	2	1602	--	--	--	--	98	0.31	3.40	1.18	83.15	30.95	51	1
DP&L	PM_3225_B2RF	2	2100	--	--	--	--	128	0.34	4.11	1.20	83.40	30.05	51	1
Dyna_Gro	CTO_7550_B2RF	5	**	--	--	--	--	**	0.34	4.06	1.16	81.50	25.25	41	1
Dyna_Gro	DG_2100_B2RF	4	**	1442	--	1442	--	**	0.31	3.83	1.15	80.70	25.00	51	1
Dyna_Gro	DG_2242_B2RF	4	**	--	--	--	--	**	0.28	3.70	1.17	80.00	26.40	51	1
Dyna_Gro	DG_2383_RF	3	1795	--	--	--	--	109	0.34	3.91	1.14	81.20	25.85	51	1
Dyna_Gro	DG_2490_B2RF	3	1742	--	--	--	--	106	0.33	3.42	1.14	80.85	24.00	51	1
Dyna_Gro	DG_2520_B2RF	4	**	--	--	--	--	**	0.31	3.80	1.17	79.75	25.95	41	2
Dyna_Gro	DG_OA265_RF	4	**	--	--	--	--	**	0.29	3.80	1.21	84.30	32.60	51	1
Fibermax	FM_9150F	4	**	--	--	--	--	**	0.30	3.65	1.20	80.25	29.25	41	2
Fibermax	FM_9180B2F	2	1578	--	--	--	--	96	0.29	4.05	1.20	83.00	29.80	41	2
Nexgen	NG_1553R	4	**	1559	1095	1559	--	**	0.32	3.39	1.17	83.20	26.65	41	1
Nexgen	NG_1572RF	1	1639	--	--	--	--	100	0.31	3.30	1.17	81.55	27.85	51	2
Nexgen	NG_2448R	3	1499	1602	1237	1551	1446	91	0.31	4.02	1.16	82.05	29.45	51	1
Nexgen	NG_2549B2RF	3	1444	--	--	--	--	88	0.31	3.79	1.12	82.80	27.40	41	2
Nexgen	NG_3273B2RF	4	**	1388	--	1388	--	**	0.26	3.62	1.14	79.85	23.90	41	2
Nexgen	NG_3348B2RF	2	1525	--	--	--	--	93	0.32	3.45	1.18	82.85	29.85	41	1
Nexgen	NG_3410RF	2	1778	--	--	--	--	108	0.32	3.45	1.17	81.35	26.10	51	1
Nexgen	NG_3550RF	3	1732	1554	784	1643	1357	106	0.31	3.87	1.19	82.35	28.55	41	2
PhytoGen	PHY_315_WRF	4	**	--	--	--	--	**	0.32	3.86	1.13	79.75	25.15	41	1
PhytoGen	PHY_370_WR	5	**	1533	--	1533	--	**	0.32	4.36	1.13	81.70	25.55	41	2
PhytoGen	PHY_375_WRF	5	**	--	--	--	--	**	0.33	4.39	1.13	81.20	23.35	51	1
PhytoGen	PHY_425_WRF	3	2068	--	--	--	--	126	0.35	4.41	1.15	81.55	26.25	51	1
PhytoGen	PHY_485_WRF	4	**	1598	--	1598	--	**	0.32	4.56	1.16	82.20	25.60	51	1
Stoneville	ST_4427B2RF	2	1536	--	--	--	--	94	0.31	3.80	1.14	82.80	25.95	51	1
Stoneville	ST_4498B2RF	3	1726	--	--	--	--	105	0.35	4.18	1.18	81.65	28.05	51	1
Stoneville	ST_4554B2RF	3	1838	1661	773	1750	1424	112	0.35	4.32	1.15	82.10	25.55	51	1
Stoneville	ST_4596B2RF	3	1558	--	--	--	--	95	0.31	3.95	1.24	81.85	28.50	51	1
Stoneville	ST_4678B2RF	2	1557	--	--	--	--	95	0.31	4.30	1.19	83.55	28.00	61	1
Stoneville	ST_5327B2RF	2	1931	--	--	--	--	118	0.34	3.99	1.18	83.50	28.55	41	2
Average		3	1640	1465	980	1552	1362	100	0.31	3.92	1.16	81.86	27.31	--	--
CV (%)		--	20	11	23	15	18		10	6	2	1	6	--	--
LSD(0.05)		--	397	249	326	323	324		0.04	0.49	0.05	2.06	3.19	--	--

* Damage Rating was a visual rating taken on September 13, 2007 based on phenoxy herbicide damage.

** Only yields for varieties with damage ratings of 1, 2 or 3 were reported.